

FORM A SIGN

SIGNS STICKERS DESIGN

(03)9561 7300 info@formasign.com.au

How to Measure and Template your Deck

Accuracy is paramount with your template. If you are unsure at any point, please don't guess, call us on 03 95617300.

Materials:

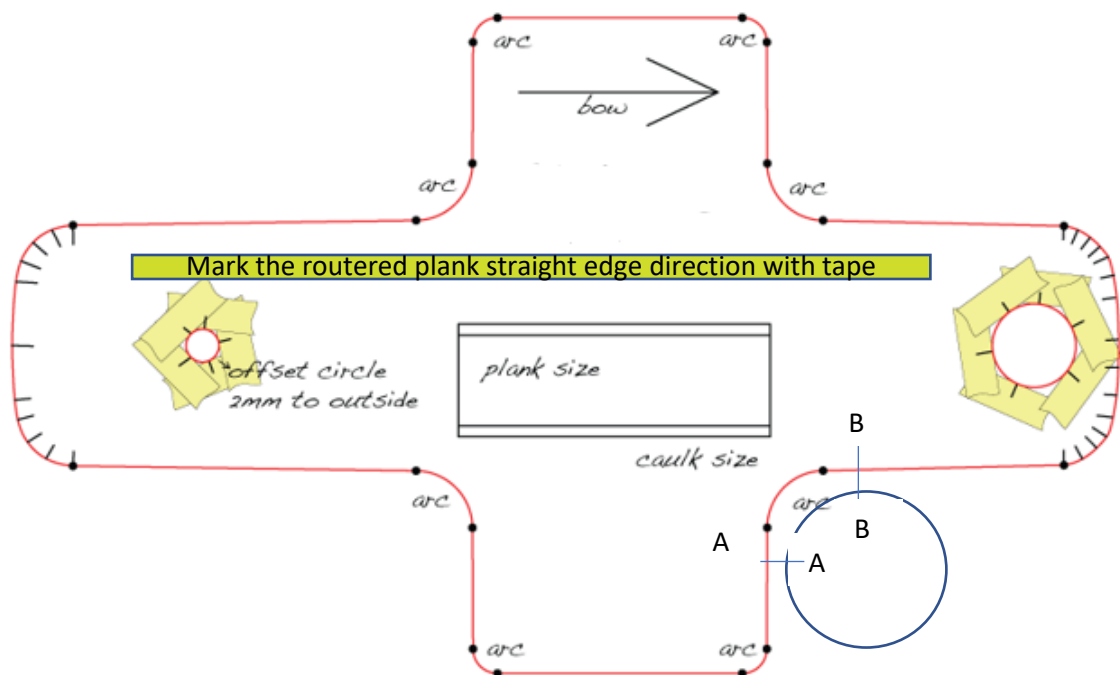
Sharpie Pen

Plastic templating material

Plastic cutting knife – warning, blades are extremely sharp, so handle with care

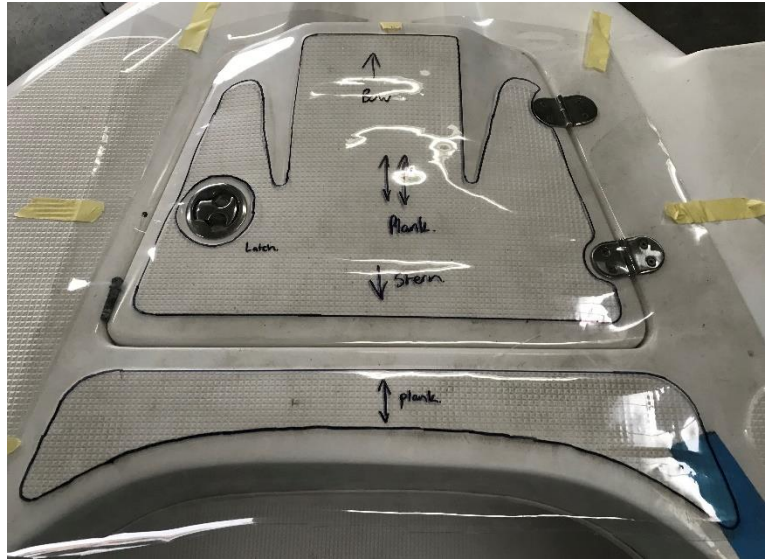
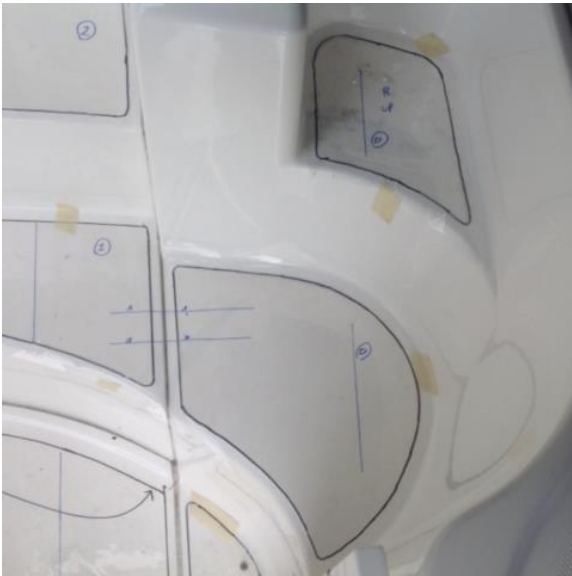
Tape Measure – not included with kit

Masking tape – not included with kit



- Roughly cut your plastic to fit the areas to be patterned and hold down with 50mm masking tape.
- Mark out each desired panel with a thin point Sharpie marker. Thin marker lines will result in more accurate CNC cutting. If multiple panels will create a kit, it's a good idea to mark out the spacing between panels where possible. This allows us to re-assemble the whole kit accurately in our CAD software.

- Mark panels that fit next to each other with the same letter and hash marks. (A-B)



- If tracing an old fibreglass grip line, it's a good practice to build up your new panels just slightly bigger to hide those edges. This can be done by tracing the grip line, then noting directly next to it how many millimetres you would like the final pieces offset and drawing arrows to indicate which side.
- It is important to mark snap heads, screws, and cut-out circles to a very high degree of accuracy. If your pattern lines are shaky, indicate exactly which points fall on the circle edges with small hash mark ticks.
- Placing a small dot at the ends of all straight segments will let us know those sections are straight, even if the drawn line is somewhat wavy.
- Use your tape measure to measure key lengths and write these on your template.
- Take a photo of each drawn template on your boat before you remove the template from the boat.
- Number each part and note bow, stern, port and starboard direction.
- Lay all template on a flat surface / floor and take a picture of the layout.
- Send your photos to info@formasign.com.au
- Send your template kit to 167 Browns Road, Noble Park North, VIC 3174
- Once we receive your plastic template we will pro-line trace it into the computer, neaten up the lines and add the artwork to the template. You will then receive a paper copy of your actual template to re-fit into the boat.
- Once your template is finalised we will ship you your decking kit with installation instructions.